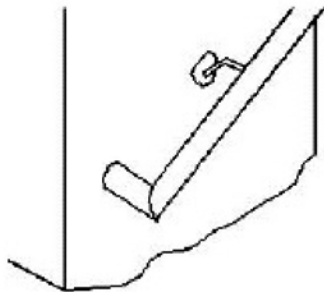
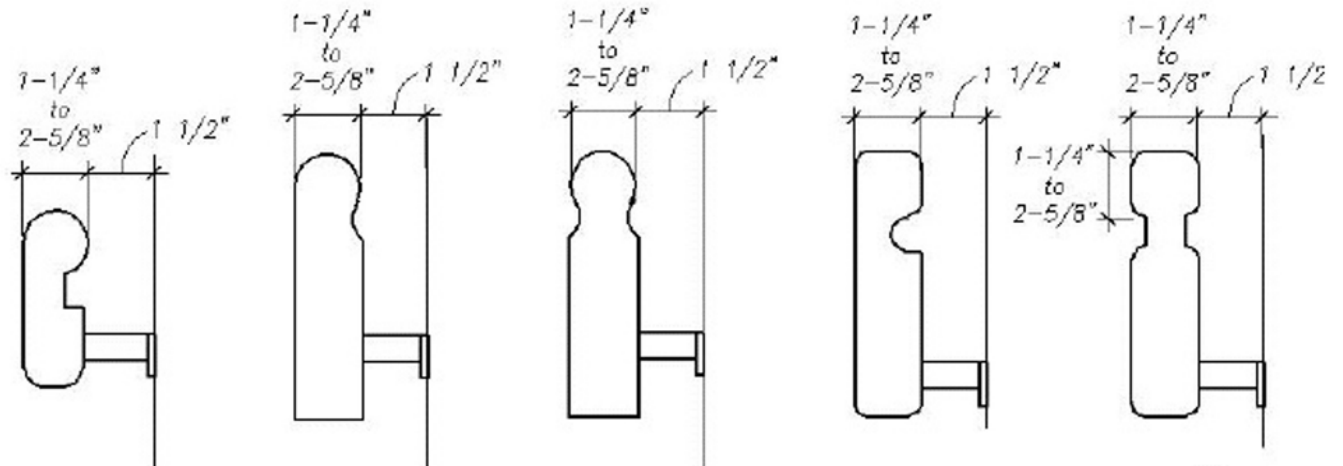
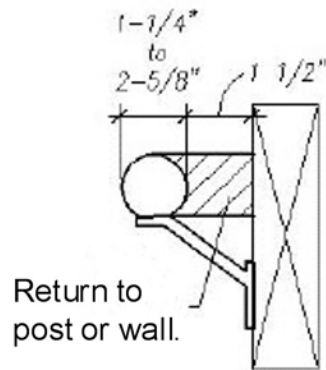
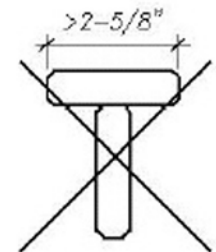
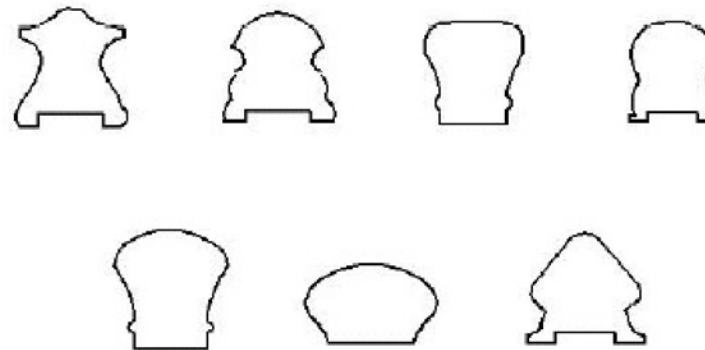


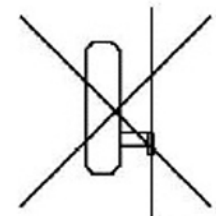
Acceptable Handrail Examples



Handrail returned to newel post or wall.



Not Acceptable



Not Acceptable

IRC R315.2: Handrail Grip Size

The handgrip portion of handrails shall have a circular cross section of 1 1/4" minimum to 2 5/8" maximum. Other handrail shapes that provide an equivalent grasping surface are permissible. Edges shall have a minimum radius of 1/8".